

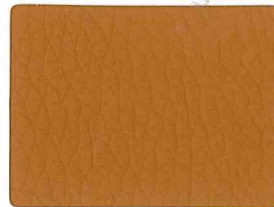
STAPLE

non pvc seating

GRADE
1



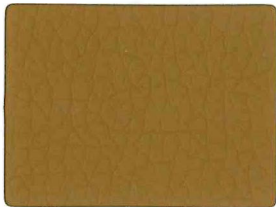
QS STP 60 Raven



STP 61 Butterscotch



STP 62 Chamois



STP 63 Malt



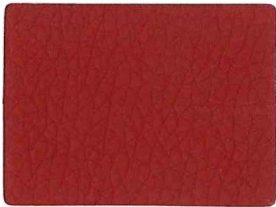
STP 64 Camel



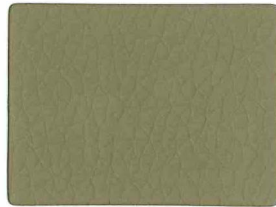
STP 65 Smith



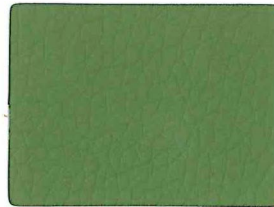
QS STP 66 Mist



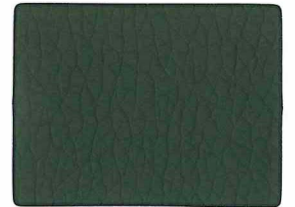
STP 67 Fire



QS STP 68 Morel



STP 69 Spruce



QS STP 70 Tempest



STP 71 Paprika



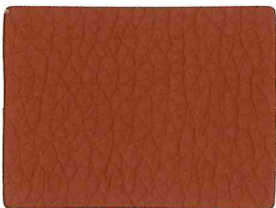
STP 72 Taupe



STP 73 Academy



QS STP 74 Nautical



STP 75 Tabasco



STP 76 Mink



STP 77 Monarch



STP 78 Voyage

QS via seating quick-ship fabric

Performance Summary

- Enhanced soil + stain resistance
- Enhanced abrasion resistance
- Fluid barrier
- Contains an antimicrobial
- Bleach-solution cleanable

Cleaning and Maintenance

Cleaning code: **(W-S)** For water based stains use water based cleaning agents only, do not use solvents. For oil based stains use solvent cleaners only.

Bleach solutions of up to 20% may be used for more difficult stains.

For additional cleaning information visit cfstinson.com

For complete specifications visit cfstinson.com

Dye lots may vary slightly from samples shown.

*This term and any corresponding data refer to the typical performance in the tests indicated and should not be construed to imply the behavior of this or any other material under actual fire conditions.

* Multiple factors affect fabric durability and appearance retention, including end-user application and proper maintenance. Wyzenbeek results above 100,000 double rubs have not been shown to be an indicator of increased lifespan.

Specifications



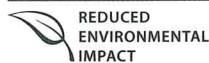
Content	Polyurethane made with Polycarbonate and Polyester resins
Finish	Inherent Soil & Stain Protection
Backing	Polyester / Cotton
Weight	20.5 oz. +/- 1.0 oz. per linear yard
Width	54"

Performance Characteristics

Abrasion Resistance † ASTM D4157	Exceeds 200,000 double rubs - Heavy Duty
Break Strength ASTM D5034	Warp: 130 lbs. min., Fill: 120 lbs. min.
Tear Strength ASTM D2261	Warp: 17 lbs. min., Fill: 13 lbs. min.
Seam Slippage ASTM D4034	Warp: 61 lbs. min., Fill: 81 lbs. min.
Colorfastness to Light AATCC 16	100 Hrs, Class 4 min.
Crocking AATCC 8	Dry: Class 5, Wet: Class 5
Fluid Barrier	Integrated Fluid Barrier
Hydrolytic Stability ASTM D3690-02 Section 6.11	Passes a minimum of 5 years; making it suitable for high-traffic commercial environments.
Antimicrobial	This product features an antimicrobial agent which inhibits the growth of microbes on the protected surface.

Flammability*

California TB 117 - 2013, Section 1	Passes
IMO A.652 (16) 8.2	Passes
MVSS 302	Passes
NFPA 260	Class 1
UFAC	Class 1
	May contribute to compliance with California Technical Bulletin 133 when used in conjunction with other suitable components.



This product is Non PVC.

Grade 1 valid through 2019. Call customer service at 1.800.433.6614 if beyond 2019.

Stinson®

W cfstinson.com P 800.841.6279 F 248.299.3884

via™
SEATING