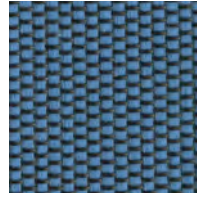


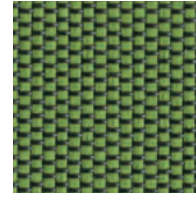


Genie™ Mesh and Fabrics

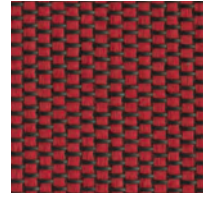
BACK MESH



Blue 3B, 3W

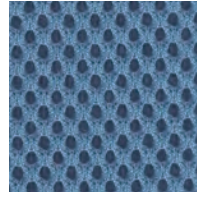


Green 5B, 5W



Red 6B, 6W

SEAT FABRIC



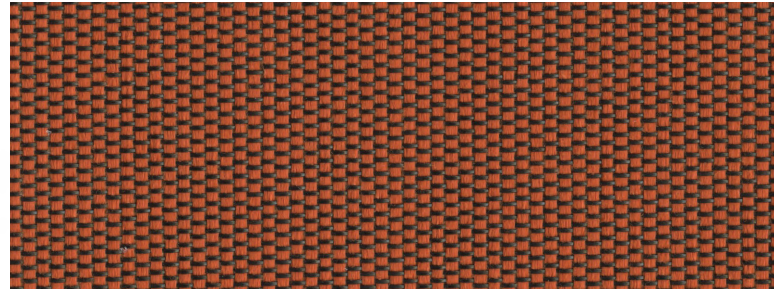
Blue SE3



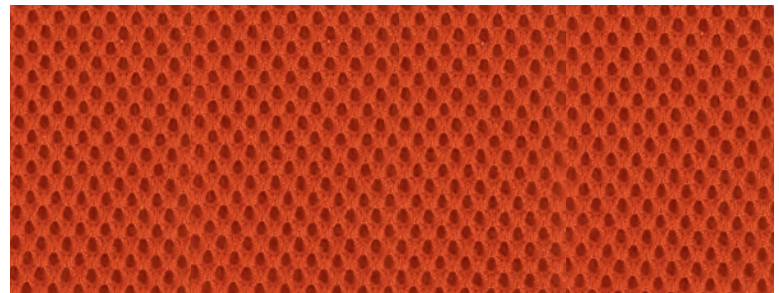
Green SE5



Red SE6



Orange 4B, 4W



Orange SE4

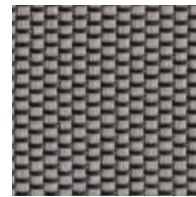
BACK MESH

B - Black shell

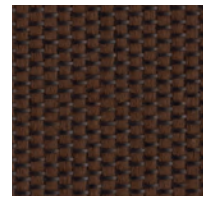
W - White shell



Black 1B, 1W



Silver 2B, 2W

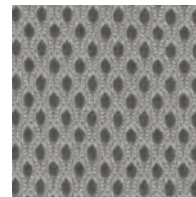


Coffee 8B, 8W

SEAT FABRIC



Black SE1



Silver SE2



Coffee SE8

Genie™ Mesh and Fabrics

SEAT FABRIC

Technical Information

- Contents: 100% Polyester
- Backing: None
- Visual Repeat: Non-Matching
- Width: 54"
- Finish: None
- Directional: Yes
- Weight: 16 oz./linear yard
- Cleanability: WS
- Railroaded: No
- Price Grade: 1

Performance Test Method Results

- Surface Abrasion: Heavy Duty ASTM-D-3597/4157 (Cotton Duck) – Exceeds 1,002,000 Double Rubs

Flammability

- California Technical Bulletin 117, Section E Passes
- NFPA 260 (Equivalent to UFAC) Class 1 Passes

Cleaning Information

WS: Water/Solvent Cleaner – Spot clean with a mild solvent, an upholstery shampoo, or the foam from a mild detergent. When using a solvent or dry cleaning product, follow instructions carefully and clean only in a well-ventilated room. Avoid any product that contains carbon tetrachloride or other toxic materials. With either method, pretest a small area before proceeding.

Additional Information

- **Memo Samples:** Please keep this card intact for Genie. For larger memo samples please call Via Customer Service: 1.800.433.6614.
- **Color Matching:** Because of industry standard dye lot variation, colors may not match exactly.

MESH BACK

Technical Information

Fiber Content: 69% CoPolyester,
31% Monofilament Pet

- Lightfastness: 40 hours Class 5
- Flammability: State of CA Tech. Bulletin 117, Sec. E
- Weight: 12.16 oz.
- Abrasion: 50,000+
- Pattern Type: Via Proprietary Mesh
- California Technical Bulletin 117, Section E Passes

Cleaning Instructions

- May be cleaned with soap and water. Do not use petroleum distillates.
- Clorox may be used if it is diluted in water (95 pbw of water to 5 pbw of Clorox) followed by a rinse.
- In hospital environments Virex may be used to wipe the fabric.
- No alcohol or solvent-based cleaners.

