



INFUSION VELLUM



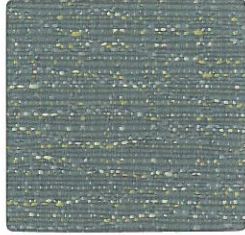
INFUSION POOL



INFUSION SEA



INFUSION WATER



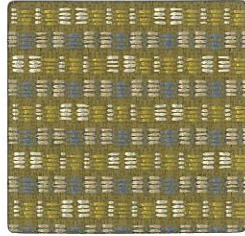
SCRIBE POOL



INFUSION SISAL



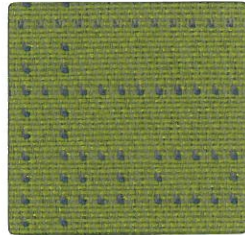
ISLA CELESTE



REDUX KEY LIME



SCRIBE JUNIPER



INFUSION LIME



ISLA THYME



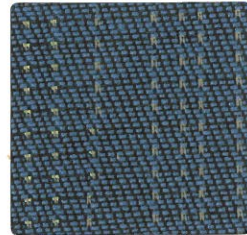
CANTER SAFARI



REDUX MOCHA



CANTER NIGHT



INFUSION AZURE



REDUX SAPPHIRE



SCRIBE NUTMEG



INFUSION TAPENADE



SCRIBE ATLANTIS



ISLA SKYLINE



INFUSION INK



CANTER SAND



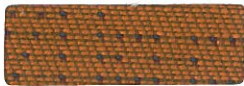
CANTER ALFALFA



CANTER WILLOW



CANTER EARTH



INFUSION CUMIN



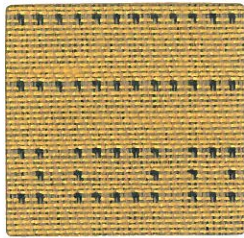
INFUSION AUTUMN



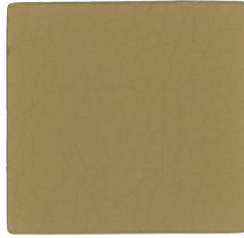
INFUSION PIMENTO



INFUSION JEWEL



INFUSION DIJON



CANTER SADDLE



REDUX AZTEC



CANTER ANCHO



REDUX RUSSET



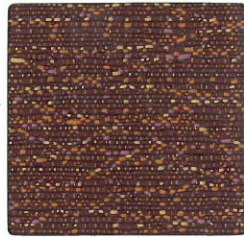
SCRIBE FLICKER



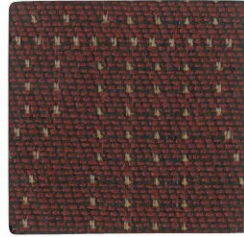
ISLA NECTAR



REDUX SPICE



SCRIBE CHIANTI



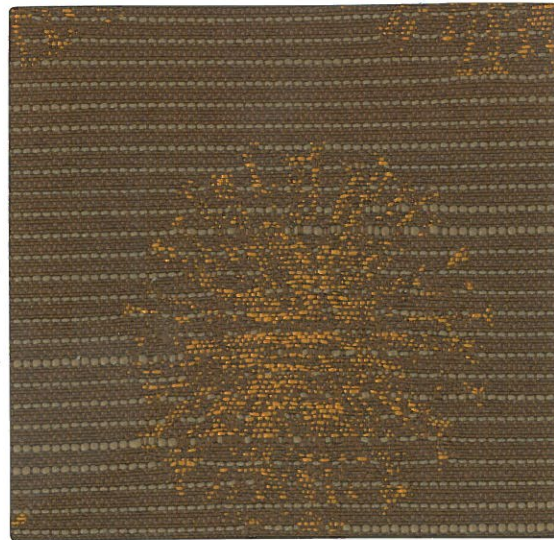
INFUSION WINE



REDUX JAZZ



INFUSION SULTAN



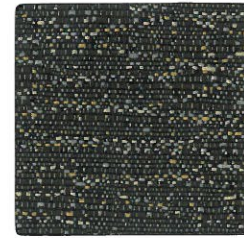
ISLA TOFFEE



INFUSION BARK



CANTER ONYX



SCRIBE ALLOY



INFUSION SHADOW



CANTER CHESTNUT



CANTER MICA



CANTER SABLE



CANTER BORDEAUX

TECHNICAL INFORMATION

Width - Pattern	Fiber Content & Backing	Finish	Abrasion (D.R.)	Light-fastness	Approx. Repeats	Cl. Code	Grade
54" CANTER ☹️ ⚠️ ☀️ 🍃 *	100% Polyurethane / PVC Free Polyester Knit Backing	Anti-Microbial Anti-Bacterial	102,000	40 Hrs. Class 4.5	(none)	L	2
54" INFUSION ☹️ ⚠️ ☀️ 🍃 ☆ *	49% Post-Industrial Recycled Polyester, 39% Rayon, 12% Post-Consumer Recycled Polyester	Crypton® Green	70,000	40 Hrs. Class 4	4 3/4" L, 4 1/2" W	W	5
56" ISLA ☹️ ⚠️ ☀️ 🍃 ☆ *	55% Post-Industrial Recycled Polyester, 29% Post-Consumer Recycled Polyester, 16% Polyester	Crypton® Green	50,000	40 Hrs. Class 4	8" L, 7 1/2" W	W	4
56" REDUX ☹️ ⚠️ ☀️ 🍃 ☆ *	65% Post-Industrial Recycled Polyester, 35% Post-Consumer Recycled Polyester	Crypton® Green	138,000	40 Hrs. Class 4	1/2" L, 1/2" W	W	3
56" SCRIBE ☹️ ⚠️ ☀️ 🍃 ☆ *	65% Post-Industrial Recycled Polyester, 35% Post-Consumer Recycled Polyester	Crypton® Green	210,000	40 Hrs. Class 4	(none)	W	3

*ACT® Registered Certification Marks



It's more than just a chair.®

Via Inc.

**205 Vista Boulevard
Sparks, Nevada 89434**

Tel: 800.433.6614

775.331.6001

Fax: 800.833.9094

775.331.9060

**MOMENTUM
TEXTILES**

800-366-6839
memosamples.com